



SEALING PLUG

TECHNICAL DATA SHEET (TDS)

BeSealed SEALING PLUG is meant for pressure resistant and watertight sealing of hollow formwork spacers. SEALING PLUG is easy to install in one single movement (installation time = 1 second). No finishing or after-treatment is required.

DESCRIPTION

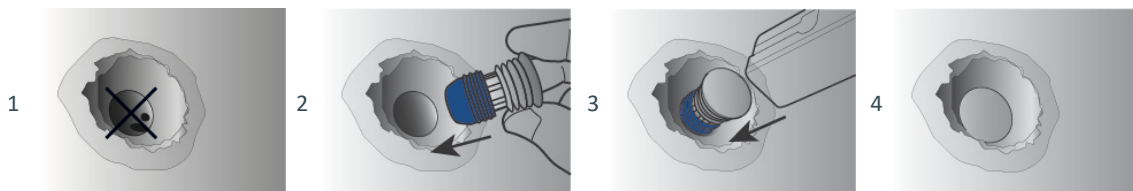
- BeSealed patented SEALING PLUG consists of an impact proof and pressure resistant core and a water swellable soft sealing, suited for PVC, fiber cement en steel spacers.
- BeSealed SEALING PLUG guarantees a pressure resistant and waterproof sealing of hollow spacers made of PVC, fibre cement or steel.



ADVANTAGES

- Hard core guarantees pressure resistance up to 6 bar.
- Soft sealing guarantees 100% waterproof up to 6 bar.
- BeSealed SEALING PLUG is fast and easy in use.
- Installation in one single move (installation time = 1 second), use only a rubber hammer.
- No finishing or after-treatment required.

APPLICATION



1. Remove remaining concrete parts from the spacer hole, ensure there are no stones, debris, or irregularities in the hole.
2. Install the SEALING PLUG manually in the spacer. Align the plug straight into the hole.
3. Hit SEALING PLUG in the spacer by use of a rubber hammer until the SEALING PLUG is installed into the spacer.
4. No finishing or after-treatment required.

TECHNICAL DATA

Volume expansion in rain water	>500%
Volume expansion in concrete water	>400%
Volume expansion in salt water	Approx. 150%
Material	Hard core = impact proof polyamide (PA) Soft sealing = hydrophilic water swellable polymer
	Resistant to contact with a wide range of chemicals. Contact our technical department in case of doubt.
Colour	Hard core = colour of concrete (grey) Soft sealing = blue
Installation temperature	Above 5°C
Weather resistance	Excellent
Chemical resistance	Good overall chemical resistance, but we advise to be careful with aromatic oils and fuels, with vegetal oils and strong aromatic solvents. Contact our sales department for detailed specific information.

SIZES AND PACKAGING



Size	Spacer inner ϕ (mm)	Pcs / bag	Pcs / box	Pcs / pallet
22 mm	21.50 – 22.20	100	1000	18000
24 mm	23.50 – 24.20	100	500	9000
26 mm	25.50 – 26.20	100	500	9000
32 mm	31.50 – 32.20	50	500	9000
34 mm	33.90 – 34.20	50	500	9000

CERTIFICATES

Detailed reports and certificates available on request at info@bekina-besealed.com

SAFETY

The safety datasheet of SEALING PLUG is available on request at info@bekina-besealed.com